



- 4 Bed detached House.
- Extended Kitchen/ Living/ Dining Room.
- 2 Receptions
- Master bedroom with en-suite.
- Downstairs WC and utility room.
- Off street parking.
- Great size garden and patio, south west facing.



Located in a quiet cul-de-sac in Menston Village, this stylish and much improved home is a catch for any family.

The private drive leading up has been newly paved. The property sits top and centre set slightly behind a resin drive and welcoming porch. The current owners have modernised this home entirely, new roof, rendering, double glazing to name a few.

On entering the property into a good-sized hallway, you will find the living room off the left. With stone fireplace and multi fuel stove burner along with vintage style radiator, the rich décor oozes charm and sophistication. Not to mention the large window letting in the summer sun.

Leading through the hall passed the w/c is the home's hub. A stunning open plan kitchen dining area. This trendy space is great for family time and entertaining, with French doors leading out onto the slate stone patio. The striking exposed brick wall and open breakfast bar exudes sociability. It's just FAB!

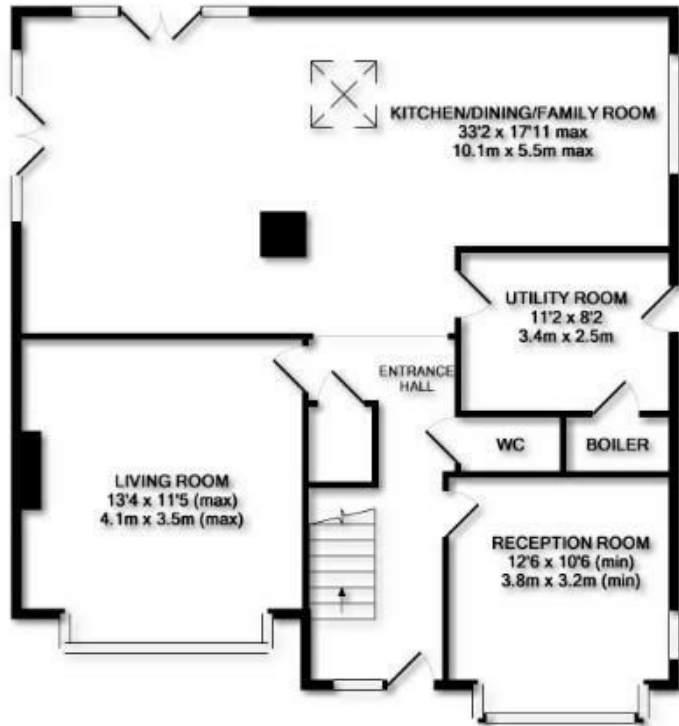
The kitchen hosts plenty of worktop and storage space, with built in dishwasher and fabulous large range cooker, just perfect for that Sunday roast and cosy down after a refreshing walk up the Chevin, with the added bonus of under floor heating.

The utility area is a handy and practical space, plenty of room for the kids' muddy boots and winter coats and helps to keep the entrance hall clutter free for the mad Monday morning dash. There is a second reception, currently used as an office, it's a great versatile space with plenty of light. This property has four bedrooms and a shower room, three doubles and a single. All lovely light spaces, plenty of room and neutral décor to suit any style.

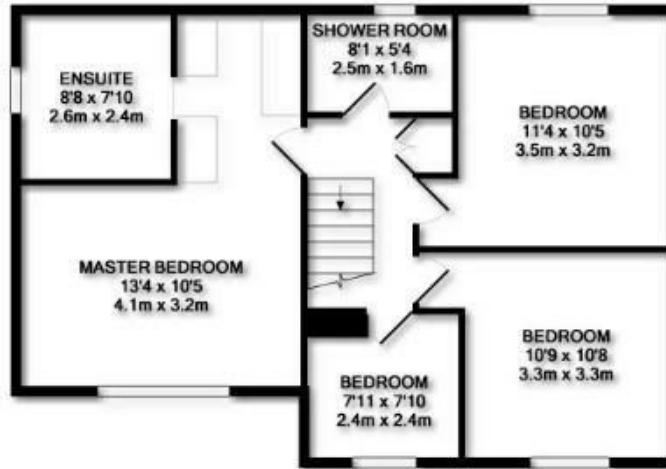
The master bedroom is a great size with tasteful décor. Plus the open walk in wardrobe area; every girl's best friend! Which leads to the en-suite bathroom which is just gorgeous! Modern on trend grey, with a real nordic feel. A fab free-standing roll top bath and separate shower gives the option for practicality and relaxation to suit every mood.

Outside has been expertly modernised. Slate stone patio, perfect for bbq season, landscaped with sleepers, grass area and inclining flow make for an excellent family space, entertaining guests and birthday parties. The design has been well planned and adds to the fun feel of the entire home. Ticks all the boxes.





GROUND FLOOR



1ST FLOOR

Whilst every attempt has been made to ensure the accuracy of the floor plan contained here, measurements of doors, windows, rooms and any other items are approximate and no responsibility is taken for any error, omission, or mis-statement. This plan is for illustrative purposes only and should be used as such by any prospective purchaser. The services, systems and appliances shown have not been tested and no guarantee as to their operability or efficiency can be given.  
Made with Metropix ©2018

